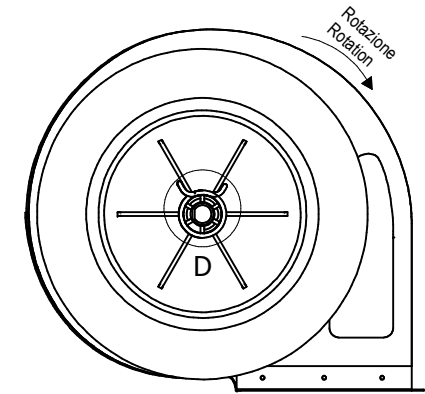
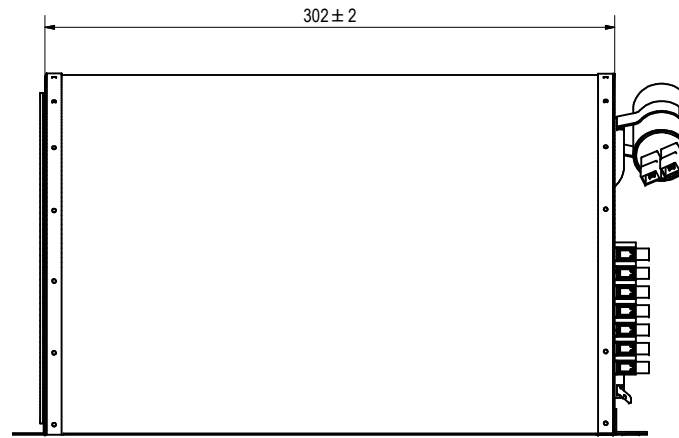
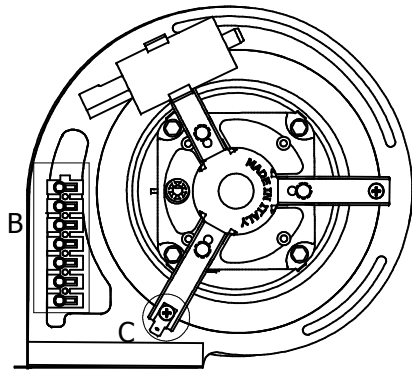
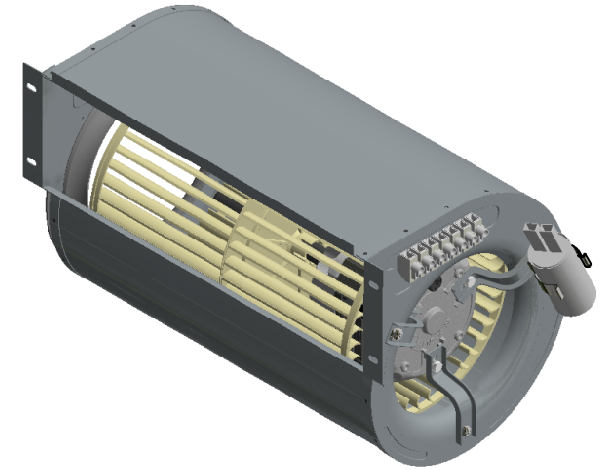
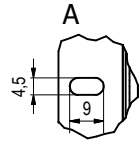
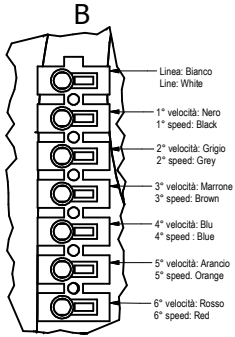


ATTENZIONE: il motore deve essere fornito cablato
ATTENTION: the motor must be supplier wired



Faston femmina 6.3x0.8mm
Ground connection

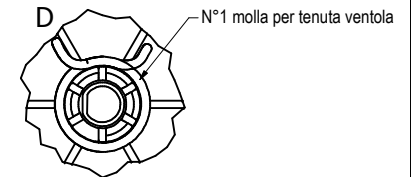
Motore - Motor	Classe B, versione a bronzine Class B, sleeve bearings
Coclea - Housing	Ferro zincato - Iron Galvanized
Ventola - Fan	146x240mm materiale plastico Thermoplastic material

FMI ITALIA s.r.l DCK20000
230V - 50Hz - 25/80W
0.35A - 1200RPM - Cl. B -
C= 2uF/450V
Therm. Prot.
η max=10.39%

Bianco/White - com.L
 Nero/Black - 1° speed max
 Grigio/Grey - 2° speed
 Marrone/Brown - 3° speed
 Blu/Blue - 4° speed
 Arancio/Orange - 5° velocità
 Rosso/Red - 6° speed
 Rosso/Red
 Giallo/Yellow

CE M
 EP 207/2011/EC non applicabile
 XX/YY
 N° Ord.

Mese e anno di produzione
month and year of production



Issued date: 14/09/2017
Date

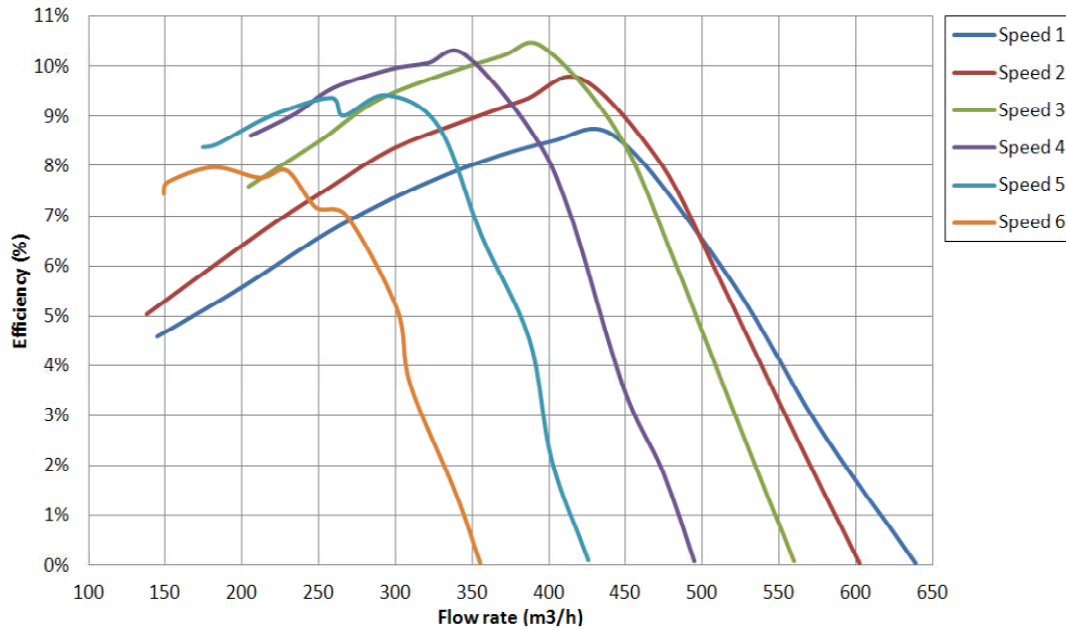
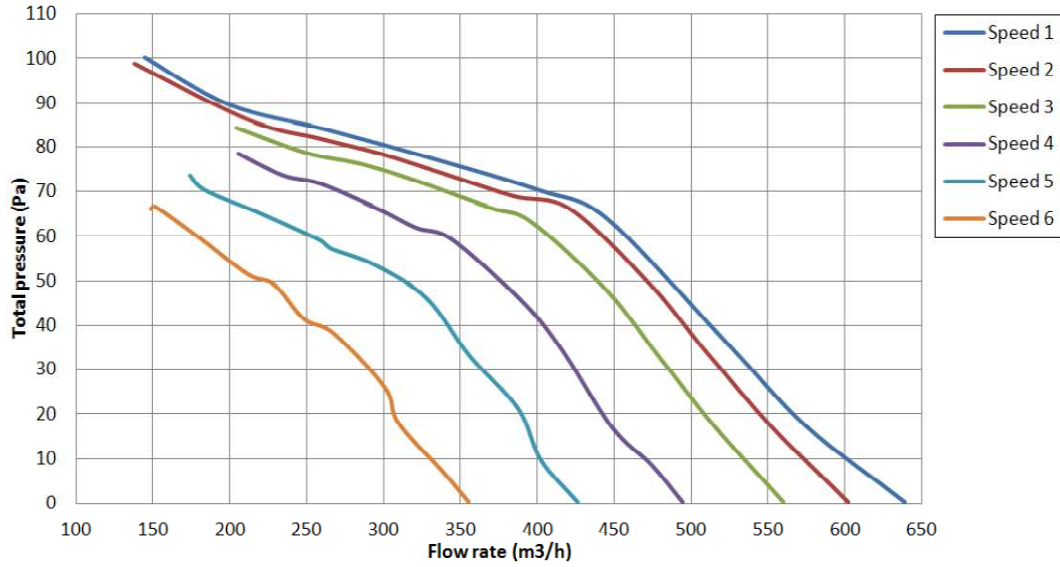
Modification: Sign.

Customer stamp for acceptance

Note

FAN DECK

1
2
3
4
5
6



Le prove sono state eseguite secondo le norme ISO5801 - AMCA210 - UNI10531
 Air flow graphs have been draw in according to ISO5801 - AMCA210 - UNI10531

Modello Part number	Motore Motor	Volt Voltage	Potenza - Power		Corrente Current	Condensatore Capacitor	RPM	Ventola	
			Resa - Out (W)	Assorbita - In (W)				N°	Tipo/Type
DCK20000	LA65	230	25	80	0,35	2uF	1200	1	146x260mm