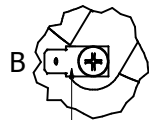
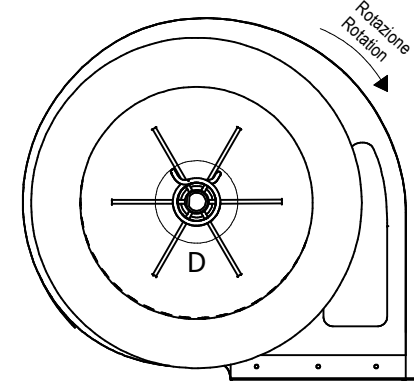
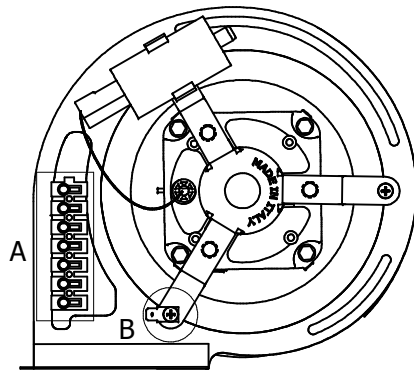
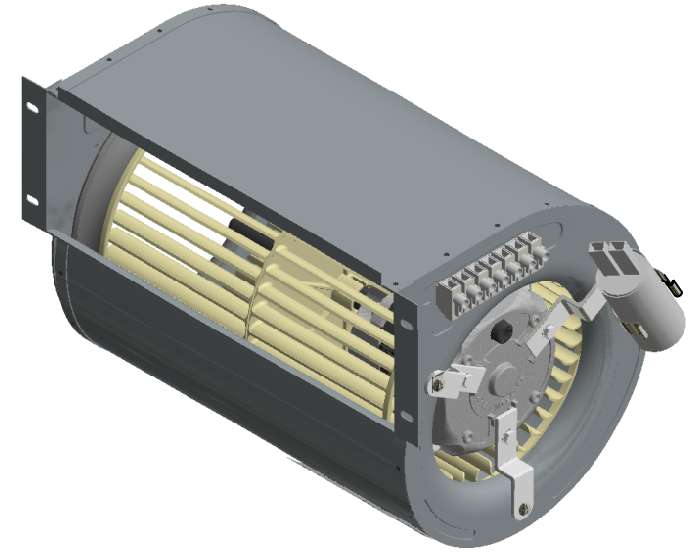
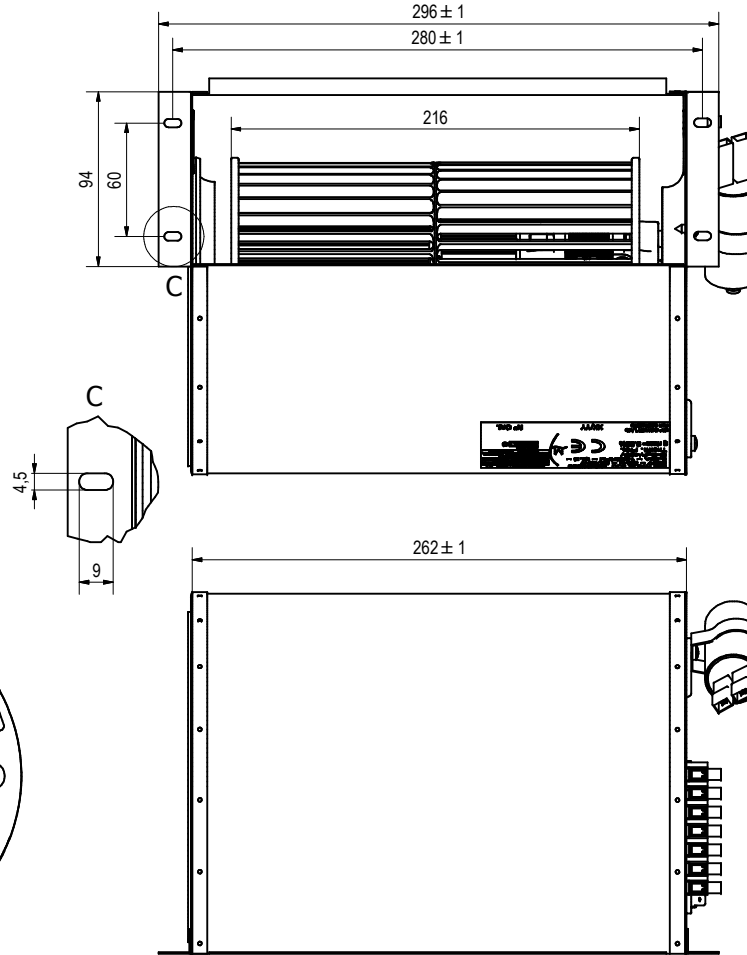
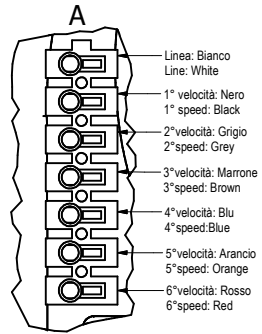


ATTENZIONE: il motore deve essere fornito cablato
ATTENZIONE: the motor must be supplied wired



Faston femmina 6.3x0.8mm
 Ground connection 6.3x0.8mm

Motore - Motor	Classe B, versione a bronzine Insulation class B, Sleeve bearings
Coclea - Housing	Ferro Zincato - Iron galvanized
Ventola - Fan	146x216mm materiale plastico Thermoplastic material

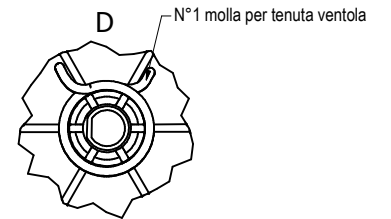
Etichetta dati
 Data label

FMI ITALIA s.r.l. DCK19000
230V - 50Hz - 25/80W
0.35A - 1200RPM - Cl.B -
C=2µF/450V
Therm. Prot.
η max= 9.88%

Bianco/White - com.L
 Nero/Black - 1° speed max
 Grigio/Grey - 2° speed
 Marrone/Brown - 3° speed
 Blu/Blue - 4° speed
 Arancio/Orange - 5° velocità
 Rosso/Red - 6° speed

CE M
 non applicabile XX/YY N° Ord.

Mese e anno di produzione
 Month and year of production



Issued date: 11/09/2017
 Date

Modification:

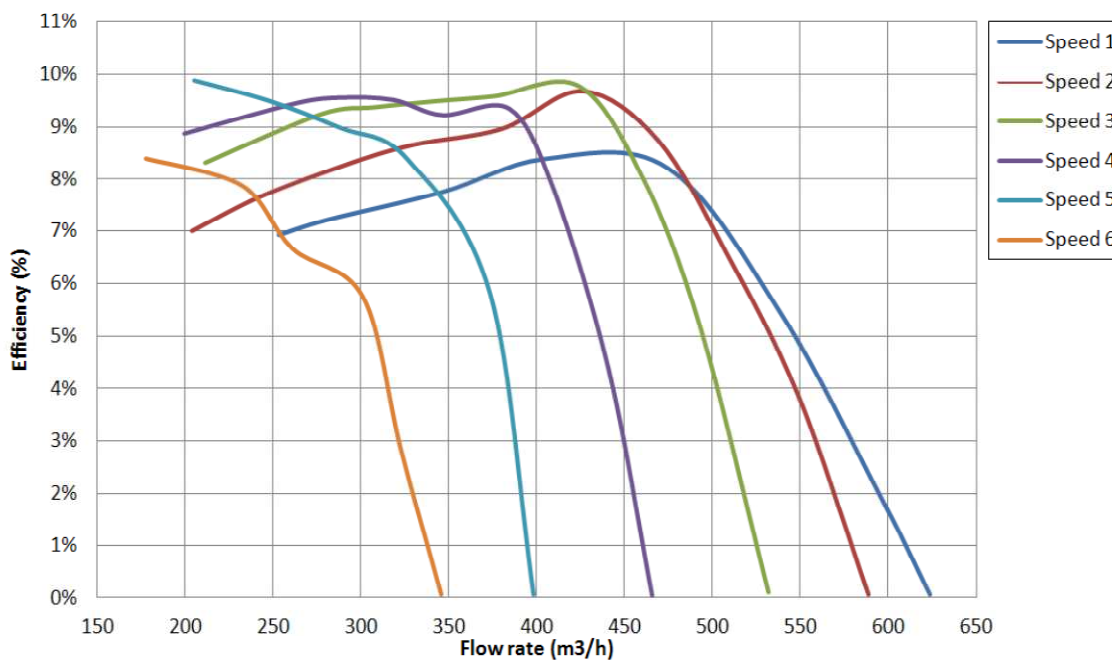
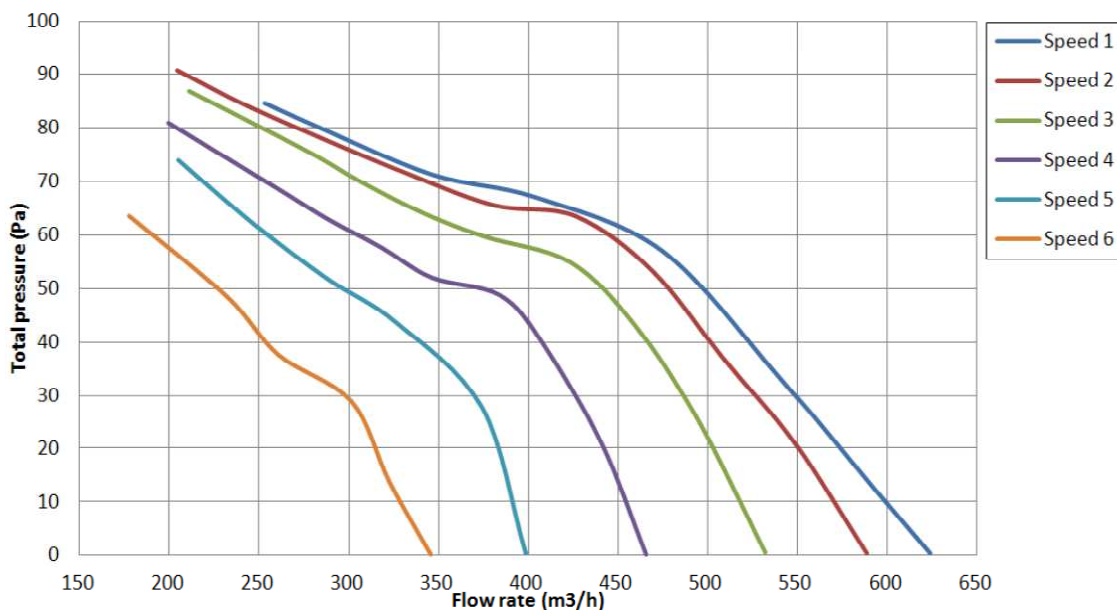
Sign.

Customer stamp for acceptance

Note

FAN DECK

1
2
3
4
5
6



Le prove sono state eseguite secondo le norme ISO5801 - AMCA210 - UNI10531
 Air flow graphs have been draw in according to ISO5801 - AMCA210 - UNI10531

Modello Part number	Motore Motor	Volt Voltage	Potenza - Power		Corrente Current	Condensatore Capacitor	RPM	Ventola	
			Resa - Out (W)	Assorbita - In (W)				N°	Tipo/Type
DCK19000	LA65	230	25	80	0,35	2uF	1200	1	146x216mm